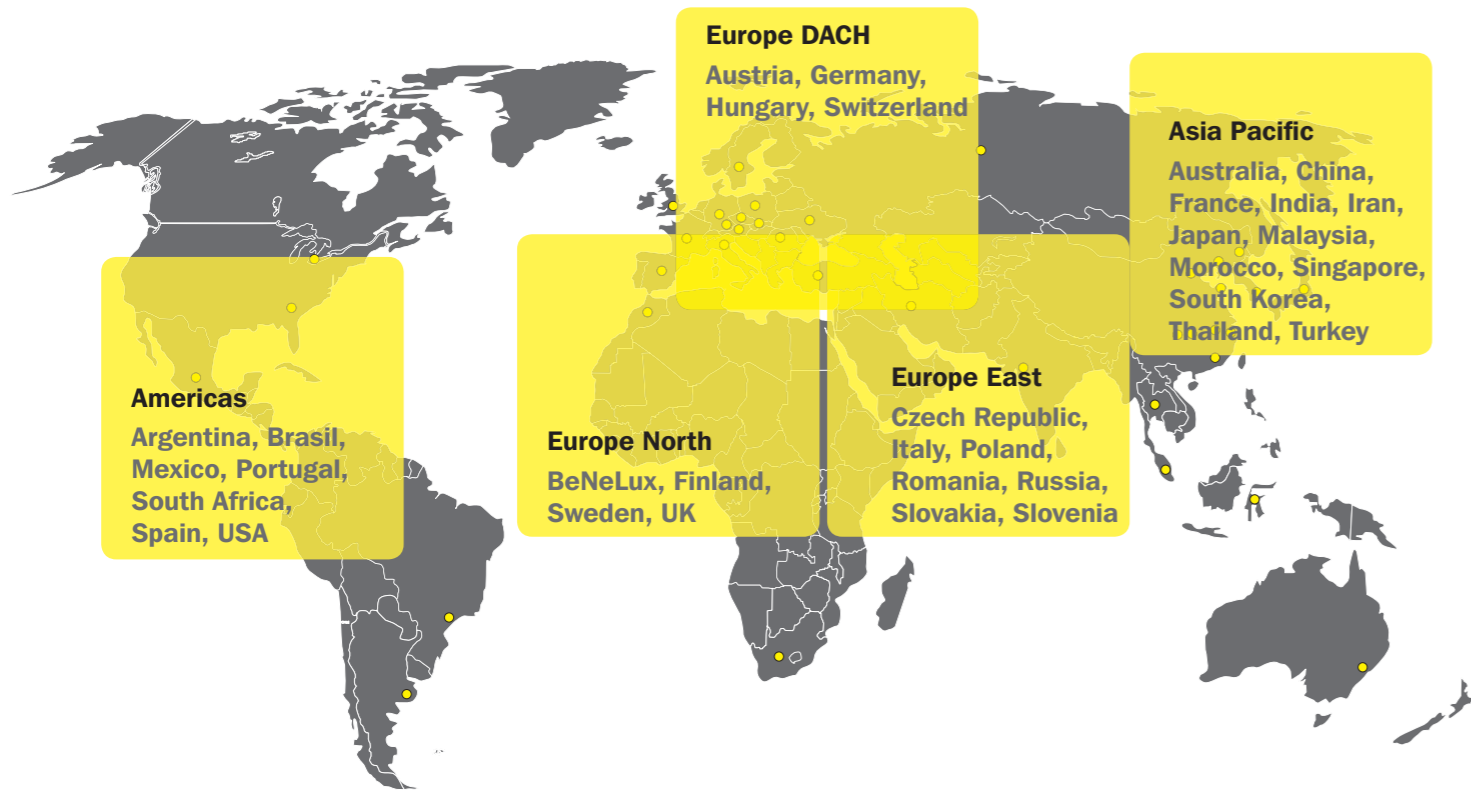


# Country Desks



**Americas**  
Argentina, Brasil, Mexico, Portugal, South Africa, Spain, USA

**Europe DACH**  
Austria, Germany, Hungary, Switzerland

**Europe North**  
BeNeLux, Finland, Sweden, UK

**Europe East**  
Czech Republic, Italy, Poland, Romania, Russia, Slovakia, Slovenia

**Asia Pacific**  
Australia, China, France, India, Iran, Japan, Malaysia, Morocco, Singapore, South Korea, Thailand, Turkey

## Americas

**Head of Sales Operations**  
**Dimitri Martin**  
dimitri.martin@tuenkers.de

**Coordinators**  
**Milan Dudic**  
milan.dudic@tuenkers.de  
**Karla Villatoro**  
karla.villatoro@tuenkers.de

## Europe North

**Head of Sales Operations**  
**Dennis Schild**  
dennis.schild@tuenkers.de

**Coordinators**  
**Milan Dudic**  
milan.dudic@tuenkers.de  
**Florian Zass**  
florian.zass@tuenkers.de

## Europe DACH

**Head of Sales Operations**  
**Joachim Schrahn**  
joachim.schrahn@tuenkers.de  
**Christian Heyer**  
christian.heyer@tuenkers.de

**Coordinators**  
**Melanie Bauer**  
melanie.bauer@tuenkers.de  
**Gabriela Greiner-Schubert**  
gabriela.greiner-schubert@tuenkers.de  
**Bärbel Hammer**  
baerbel.hammer@tuenkers.de

**Ute Hartmann**  
ute.hartmann@tuenkers.de  
**Bettina Krohn**  
bettina.krohn@tuenkers.de  
**Stefanie Linnemann**  
stefanie.linnemann@tuenkers.de  
**Gabi Neumüller**  
gabi.neumueller@tuenkers.de  
**Martina Reich**  
martina.reich@tuenkers.de  
**Henrik Wittig**  
henrik.wittig@tuenkers.de

## Europe East

**Head of Eastern Europe Operations**  
**Christian Heyer**  
christian.heyer@tuenkers.de

**Coordinators**  
**Gianluca Alessandrini**  
gianluca.alessandrini@tuenkers.de  
**Kristina Cuvalo**  
kristina.cuvalo@tuenkers.de  
**Gabriela Greiner-Schubert**  
gabriela.greiner-schubert@tuenkers.de  
**Claudia Meyer**  
claudia.meyer@tuenkers.de  
**Sandra Schwachula**  
sandra.schwachula@tuenkers.de

## Asia Pacific

**Head of Sales Operations**  
**Kaptan Hondur**  
kaptan.hondur@tuenkers.de

**Coordinators**  
**Isabell Kolp**  
isabell.kolp@tuenkers.de  
**Ling Lin-Palm**  
ling.lin-palm@tuenkers.de  
**Sladana Pavlovic**  
sladana.pavlovic@tuenkers.de  
**Larissa Westphal**  
larissa.westphal@tuenkers.de

# UNIVERSAL CLAMP



# UNIVERSAL CLAMP – ONE CLAMP FITS ALL

## Other basic types

### PK

The version with a special mechanism ensuring parallel and constant force for the clamp arm to come down plane-parallel

- Defined clamping
- Constant clamping force
- Sheet thickness levelling



### UA

The version for the US standard "NAAMS" with clamp arm at the side



### U...Z

The version with manual closure

- Manual closure
- Pneumatic opening



### U...V (as of 2020)

The version with integrated valve technology in the cylinder bottom

- Open position blocked in case of power outage
- Only one pressure connection
- Controlled via IO-Link



## The series

| Type     | Clamping torque |
|----------|-----------------|
| U 40 BR5 | 120 Nm          |
| U 50 BR5 | 160 Nm          |
| U 63 BR5 | 360 Nm          |
| U 80 BR5 | 800 Nm          |



Shorter, lighter, more efficient  
The U-clamp has benefits when compared to the Vario clamp



Stepless adjustment of the opening angle from 0° - 135°



## The U-series

Shorter, lighter, more efficient

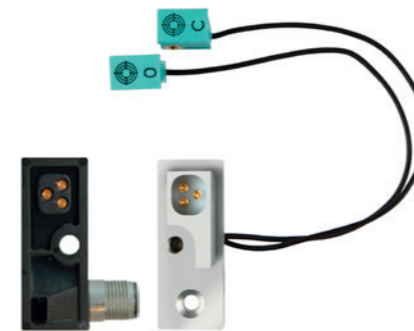
The U-series combines these efficiency-boosting parameters and provides for more space in the fixture. With its smart and compact design, the universal clamp is an alternative to the Vario clamp with the same technical data:

- Identical clamping force
- Identical fitting dimensions
- Identical holding force
- Identical load cycles (3 million)
- Proven, stepless angle adjustment from 5° - 135°

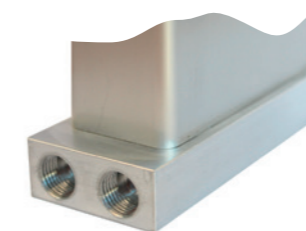
### This is new in the U-series

- New, power-optimized toggle-locked mechanism
- Smaller cylinders are used with the same clamping force: 50 instead of 63 and 40 instead of 50
- ➔ **Compressed air consumption reduced by ca. 30%**
- Integrated and enclosed sensor system T24
- Fully enclosed case

Two-part sensor concept for easy exchange with robust pin contacts



Both air connections in the cylinder bottom for more space



## Other options

### IO-Link

The version with smart IO-Link sensor

- Identification
- Configuration of outputs
- Condition monitoring
- Error detection



### W

The version with welding-resistant coating



### H / HO / HD

The version with additional locking in the open and/or closed position through integrated stop valves in the cylinder bottom



### RB

The version with mechanical clip in the cylinder bottom

